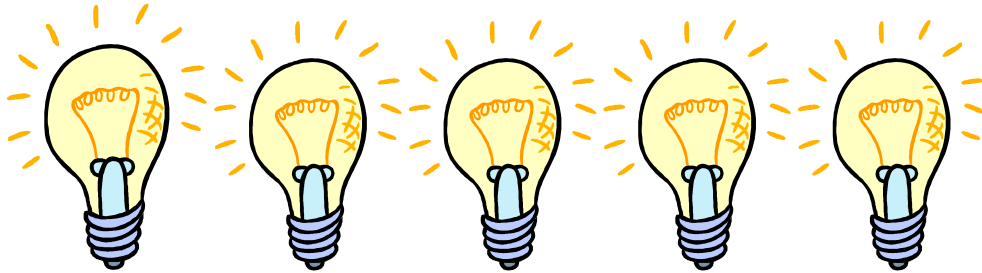


The attached sign could be put on pop machines in your building.....(Scroll down to page 2)

YES, THE LIGHTS ARE OUT.
WE ANNUALLY SAVE 110 OF YOUR TAX
DOLLARS FOR OUR SCHOOLS FOR *EACH*
VENDING MACHINE IN THE DISTRICT.
THE MACHINE STILL WORKS! 😊 😊 😊



YES, THE LIGHTS ARE OUT.
WE ANNUALLY SAVE 110 OF YOUR TAX
DOLLARS FOR OUR SCHOOLS FOR *EACH*
VENDING MACHINE IN THE DISTRICT.
THE MACHINE STILL WORKS! 😊 😊 😊

